

LEESBURG EXECUTIVE AIRPORT
AIR TRAFFIC CONTROL TOWER

Airport Commission

02/11/2026



PROJECT LOCATION



PROJECT SITE



- PROPOSED NEW ACCESS ROAD
- NEW SECURITY GATE
- PARKING
- CONTROL TOWER
- SCREENED UTILITY EQUIPMENT YARD

EXISTING FAA BUILDING

EXISTING TERMINAL



PROPOSED AIR TRAFFIC CONTROL TOWER



PROPOSED TOWER
• Height = 86 ft

LANDSCAPING AREA

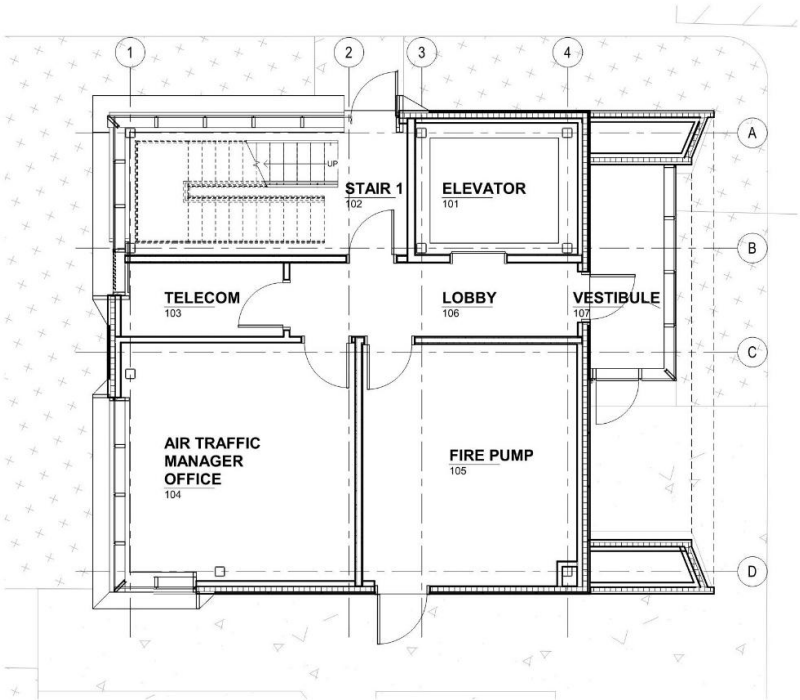
SCREENED UTILITY EQUIPMENT YARD

SYCOLIN ROAD

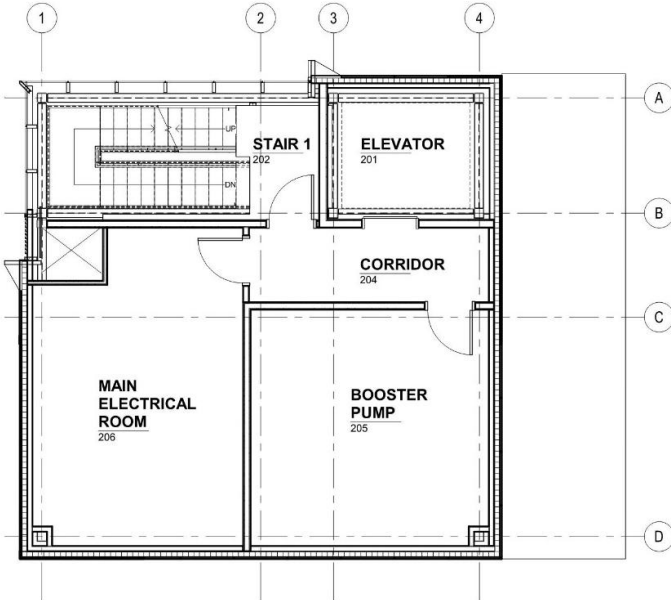
PARKING

EXISTING FAA BUILDING

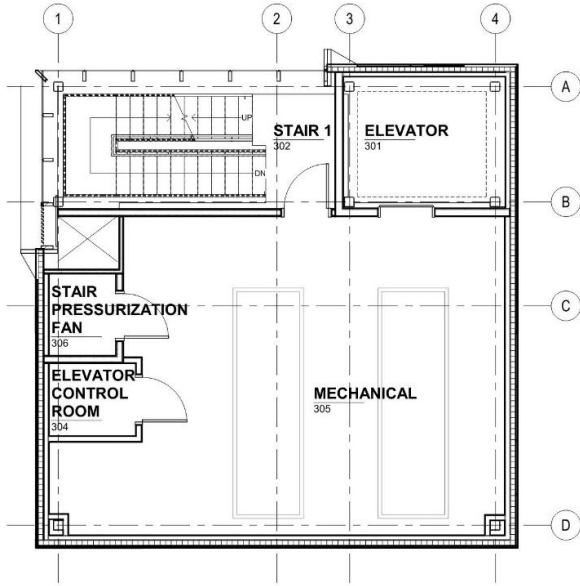
FLOOR PLANS



LEVEL 1

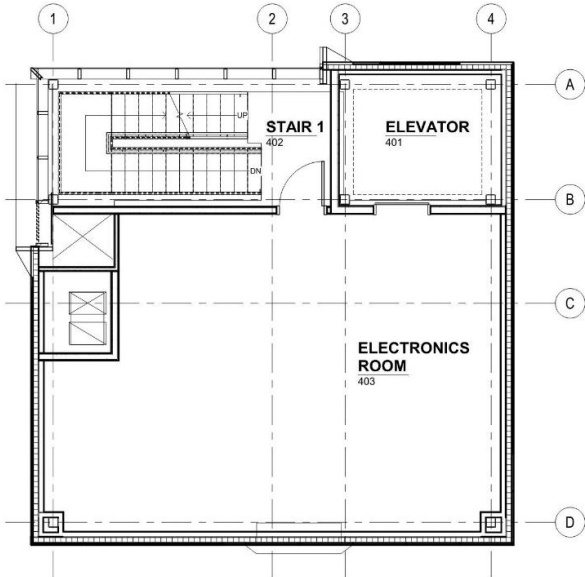


LEVEL 2

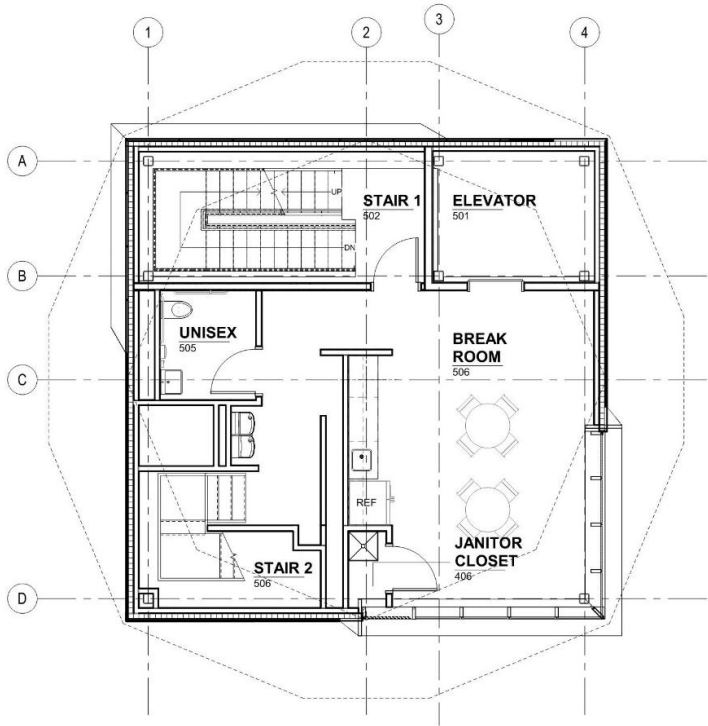


LEVEL 3

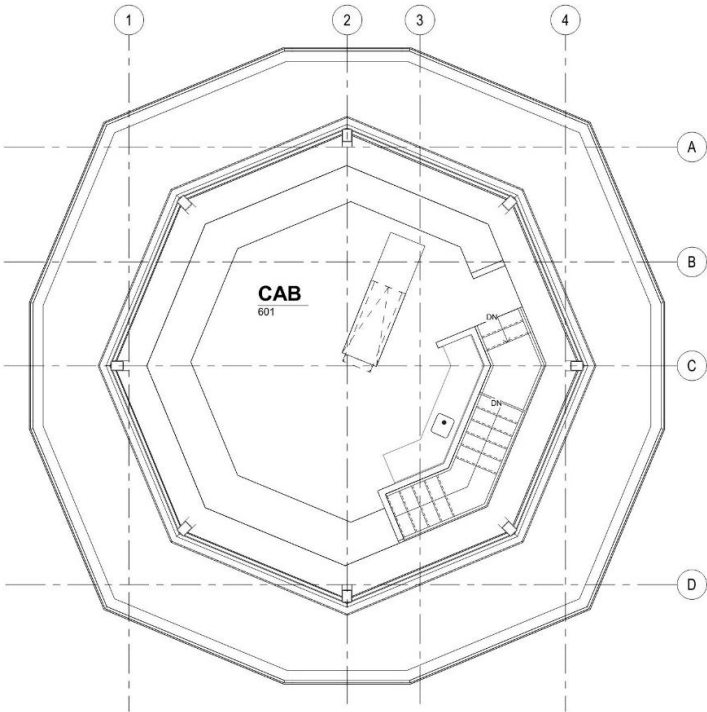
FLOOR PLANS



LEVEL 4



LEVEL 5



LEVEL 6

ARCHITECTURAL RENDERINGS



The tower expresses the shifting character of the **Potomac River** through a layered façade of textured cladding panels. Subtle color variations evoke the natural gradients found along the river's edge. These tonal shifts and the textured panels wrap the building in a subtle, rhythmic stratification creating a sense of movement, as if the building itself has been shaped by time, water, and erosion.

Extruded window frames punctuate this field of textures, projecting slightly outward like small lookouts carved into a rocky shoreline. Their profiles catch sunlight throughout the day, while the glazing reflects drifting clouds much like the river mirrors the sky. A larger extruded frame, integrated with architectural lighting, clearly defines and accentuates the tower's main entry.



MATERIALITY

- METAL PLATE WALL PANELS
- LAMINATED GLAZING
- PRE-FINISHED METAL PANEL SOFFIT
- PRE-FINISHED METAL PANEL
- GLAZED ALUMINUM CURTAINWALL SYSTEM WITH FRITTED GLASS
- TEXTURED ULTRA HIGH PERFORMANCE CONCRETE RAINSCREEN PANEL SYSTEM
- SMOOTH ULTRA HIGH PERFORMANCE CONCRETE RAINSCREEN PANEL SYSTEM
- PRE -FINISHED METAL PANEL
- GLAZED ALUMINUM CURTAINWALL SYSTEM WITH FRITTED GLASS



ARCHITECTURAL RENDERINGS



ACCOMPLISHMENTS

- July 2025 – Siting Study Approved by FAA
- October 2025 – Environmental Assessment Drafted for FAA review

NEXT STEPS...

- Spring 2026 – Environmental Assessment Approval by FAA
- Spring 2027 – Final Design Complete and Project Bid
- Summer 2027 – Grant Application Due
- Winter 2027/2028 – Construction starts (contingent on receiving funding)
- 2029 – Construction Completion (dependent on completion of previous steps)

THANK YOU

