

TITLE: South King Street Improvements - South Street to Royal Street (27303)

STATUS: Ongoing

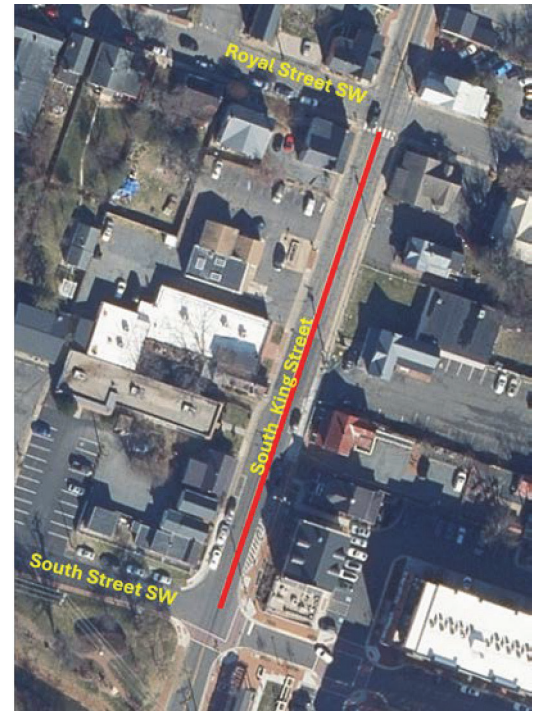
LOCATION: South King Street between Royal Street and South Street

DESCRIPTION: This project will improve approximately 620 linear feet of South King Street between South Street and Royal Street. The project consists of pavement reconstruction, drainage improvements, decorative lighting, new and rehabilitated brick sidewalks, improved driveway aprons, new curb and gutter, and curb ramps in accordance with standards of the Americans with Disabilities Act (ADA). Phase 1 will be focused on improvements on the east side of the street and Phase 2 on the west side. This project will improve sustainability in the Town by improving bicycle and pedestrian infrastructure.

OPERATING IMPACT: Minimal.

GOAL ADDRESSED: Legacy Leesburg Town Plan (2022): Strategy 4.2.2 - Improve Bicycle and Pedestrian Infrastructure; Strategy 4.4.2 - Prioritize Pedestrian and Bicycle Safety and Comfort

ESTIMATED COMPLETION DATE: Summer 2030



	FY26	FY27	FY28	FY29	FY30	FY31
DE						
LA						
CN						

Funding Sources

Sources	Total Required Project Funding	Approp. Through 6/30/25							Total 6 Yr CIP	Future Funds Required
			2026	2027	2028	2029	2030	2031		
Private Contribution	165,000	—	165,000	—	—	—	—	—	165,000	—
NVTA 30%	1,252,500	500,000	—	160,000	100,000	77,500	415,000	—	752,500	—
State - VDOT	592,500	—	—	120,000	60,000	37,500	375,000	—	592,500	—
Total Sources	\$2,010,000	\$500,000	\$165,000	\$280,000	\$160,000	\$115,000	\$790,000	\$—	\$1,510,000	\$—

Planned Uses

Uses	Total Project Cost	Approp. Through 6/30/25							Total 6 Yr CIP	Future Project Cost
			2026	2027	2028	2029	2030	2031		
Project Management	190,000	30,000	—	40,000	40,000	40,000	40,000	—	160,000	—
Preliminary Analysis	25,000	—	—	25,000	—	—	—	—	25,000	—
Design/Engineering	215,000	—	—	215,000	—	—	—	—	215,000	—
Land	120,000	—	—	—	120,000	—	—	—	120,000	—
Utility Relocation	75,000	—	—	—	—	75,000	—	—	75,000	—
Construction	1,385,000	470,000	165,000	—	—	—	750,000	—	915,000	—
Total Uses	\$2,010,000	\$500,000	\$165,000	\$280,000	\$160,000	\$115,000	\$790,000	\$—	\$1,510,000	\$—

Operating Impact

Operating/Maintenance	2026	2027	2028	2029	2030	2031
N/A	—	—	—	—	—	—
Total Impact	\$—	\$—	\$—	\$—	\$—	\$—