

**TITLE:** Evergreen Mill Road Widening (15302)

**STATUS:** Ongoing

**LOCATION:** Evergreen Mill Rd (Heritage High to South King St)

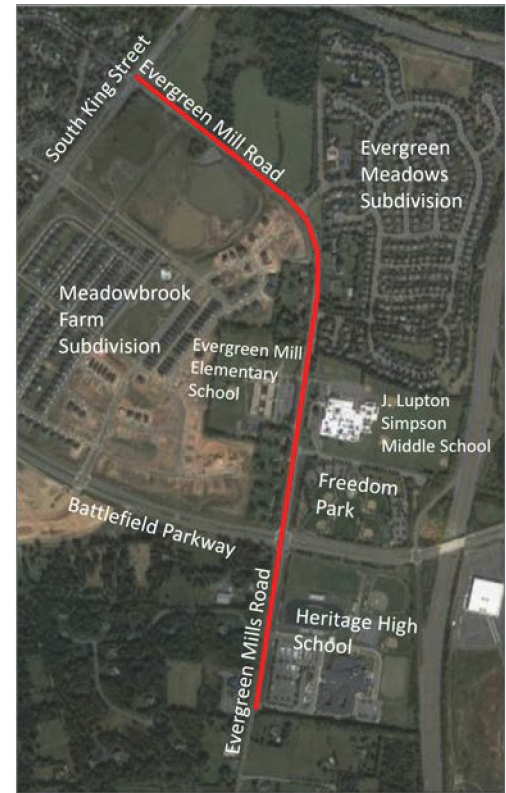
**DESCRIPTION:** This project provides for the widening of approximately 1.3 mile of Evergreen Mill Rd from the Heritage High School entrance (south of Battlefield Pkwy) to South King St (Route 15). The existing two-lane road will be widened to a four-lane road with sidewalk on one side and a shared use path on the other. It will include utility relocation, curb, gutter, and storm drainage. The project will improve sustainability in the Town by reducing power consumption through the switch to LED streetlights, reducing light and glare by using full cutoff lights, improving pedestrian connectivity through improved ADA compliance for the curb ramps and improving water quality.

**OPERATING IMPACT:** Additional pavement maintenance

**GOAL ADDRESSED:** Legacy Leesburg Town Plan (2022): Strategy 4.2.2 - Improve Bicycle and Pedestrian Infrastructure; Strategy 4.3.1 to Implement and Maintain the Transportation Improvement Plan; Strategy 4.3.2 to Manage Traffic Congestion

**ESTIMATED COMPLETION DATE:** Winter 2028/2029

	FY26	FY27	FY28	FY29	FY30	FY31
DE						
LA						
CN						



**Funding Sources**

Sources	Total Required Project Funding	Approp. Through 6/30/25							Total 6 Yr CIP	Future Funds Required
			2026	2027	2028	2029	2030	2031		
Line of Credit	1,130,000	1,125,000	—	—	—	5,000	—	—	5,000	—
PAY-GO	33,200	33,200	—	—	—	—	—	—	—	—
County Contribution	15,500,000	15,500,000	—	—	—	—	—	—	—	—
Proffers	1,920,000	1,920,000	—	—	—	—	—	—	—	—
NVTA 30%	6,963,700	6,087,500	699,100	159,100	18,000	—	—	—	876,200	—
State - VDOT	7,151,300	7,151,300	—	—	—	—	—	—	—	—
<b>Total Sources</b>	<b>\$32,698,200</b>	<b>\$31,817,000</b>	<b>\$699,100</b>	<b>\$159,100</b>	<b>\$18,000</b>	<b>\$5,000</b>	<b>\$—</b>	<b>\$—</b>	<b>\$881,200</b>	<b>\$—</b>

**Planned Uses**

Uses	Total Project Cost	Approp. Through 6/30/25							Total 6 Yr CIP	Future Project Cost
			2026	2027	2028	2029	2030	2031		
Project Management	1,051,200	940,000	49,100	39,100	18,000	5,000	—	—	111,200	—
Design/Engineering	3,235,000	2,885,000	350,000	—	—	—	—	—	350,000	—
Land	1,770,000	1,650,000	—	120,000	—	—	—	—	120,000	—
Utility Relocation	3,115,000	3,115,000	—	—	—	—	—	—	—	—
Construction	23,527,000	23,227,000	300,000	—	—	—	—	—	300,000	—
<b>Total Uses</b>	<b>\$32,698,200</b>	<b>\$31,817,000</b>	<b>\$699,100</b>	<b>\$159,100</b>	<b>\$18,000</b>	<b>\$5,000</b>	<b>\$—</b>	<b>\$—</b>	<b>\$881,200</b>	<b>\$—</b>

**Operating Impact**

Operating/Maintenance	2026	2027	2028	2029	2030	2031
Lane Mile Maintenance	15,000	20,000	20,000	20,000	20,000	20,000
<b>Total Impact</b>	<b>\$15,000</b>	<b>\$20,000</b>	<b>\$20,000</b>	<b>\$20,000</b>	<b>\$20,000</b>	<b>\$20,000</b>