



IFB NO. 31314-FY19-09
LEESBURG TOWN HALL BATHROOM REHABILITATION

ADDENDUM NO. 2

AUGUST 31, 2018

All bidders are required to use the bid form dated August 31, 2018 in order for their bid to be considered responsive (Attachment 'A'). The bid form will also be available on the Town's Bid Board in MS Word format, however any changes to the bid items' description, unit or quantity shall render the bid non-responsive.

Plan sheets showing the lower level and third floor bathrooms as well as a plan sheet showing elevations, details and schedules have been included as Attachment 'B'.

Questions and Answers:

Question 1: During the pre-bid meeting the subject of the mirrors came up and it was said that they could stay. Just want to verify if this is the case or are we doing new?

Answer 1: See response to Question #27 in Addendum #1.

Question 2: I see on the plan mounting heights for sanitary napkin and toilet seat cover dispensers. Are these to be included in the pricing, if so how many of each and models?

Answer 2: Sanitary napkin and toilet seat cover dispenser are not to be included in the pricing.

Question 3: Grab bars are also listed in the mounting heights section. Are we to provide grab bars in each stall?

Answer 3: Yes, grab bars are to be provided in each stall.

Question 4: Also had some question about a few of the quantities. Door Hooks bid form shows 26 i count 30 Toilet Paper Dispenser form shows 8 i count 15. Please verify.

Answer 4: There are 23 hooks: each ladies toilet has two (2) per door, and the men's stalls have one (1) per door. The toilet paper dispenser is double sided, one (1) per restroom. The men's room on the 3rd floor will require a surface mount two roll dispenser, Bobrick B-2840 or equivalent.

See revised bid form, Attachment 'A'. **All bidders must use the new bid form included as Attachment 'A'.**

Question 5: Under the scope of work on page 26 it is mentioned the existing GFI outlet next to the sinks is to be replaced and circuit extended, etc.....See attached drawing.

Question: Is the drawing attached?

Answer 5: No drawing is attached. Each bathroom will require the addition of two (2) duplex receptacles to the existing GFI circuit adjacent to the existing lavatory. Under the new lavatory there are two (2) access panels. A duplex receptacle will be added on the wall in the area behind each access panel. These receptacles will power the faucets and soap dispensers.

Question 6: Do the Lavatory Systems come with the plug in adapters? Or will they need to be ordered?

Answer 6: The lavatory systems (faucets and soap dispensers) have the plug in adapters included.

Question 7: Regarding the scope of work for the ceramic tile on the walls: There are two elevations shown for each bathroom on page A-102. Only the women's room has detail B6 – 102 on the wall opposite the toilets.

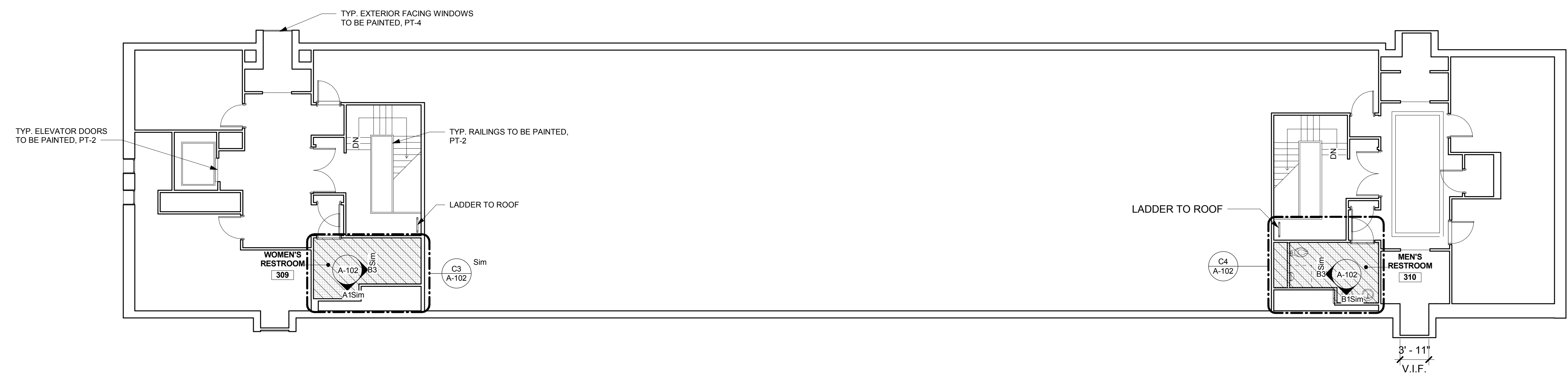
Is the tile wainscot to be on all walls in the bathrooms? Or Is the detail B-6 – 102 on drawing C2 misplaced and the tile wainscot is to only be on the 'wet walls'? Please clarify.

Answer 7: In accordance with detail B6 and respective plan and elevation views on the revised Addendum 2 drawings (**Attachment 'B'**), all walls within the bathrooms will have tile wainscot to 3ft-3in AFF.

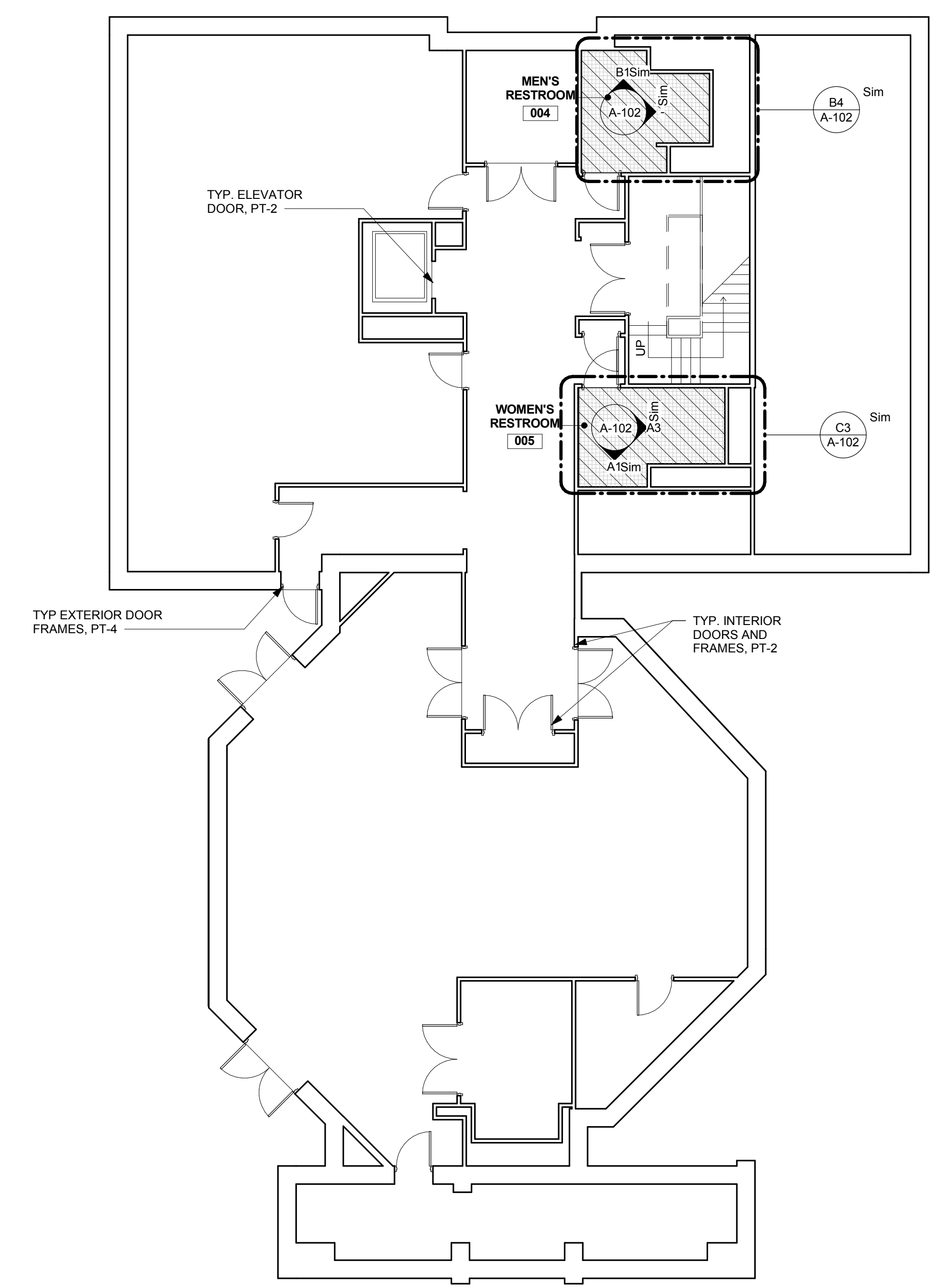
END OF ADDENDUM #2

BID FORM

Item	Description	Unit	Quantity	Unit Price	Extended Price
1	Remove and replace existing wall and floor tile, partitions, toilets and/or urinals, sinks and countertops with materials specified, including all demolition, restoration, installation of Town furnished materials and related incidentals (Men's restrooms)	EA	4		
2	Remove and replace existing wall and floor tile, partitions, toilets and/or urinals, sinks and countertops with materials specified, including all demolition, restoration, installation of Town furnished materials and related incidentals (Women's restrooms)	EA	4		
3	Carrier replacement for toilet and/or urinal, complete in place including all incidentals	EA	16		
4	Relocation of urinal drain, complete including all incidentals	EA	8		
5	Relocation of toilet and/or urinal water supply, complete including all incidentals	EA	8		
6	Bobrick B-43644 Trash receptacle, or approved equal, complete in place including all incidentals	EA	8		
7	Bobrick B-670 hook, two (2) per door, or approved equal, complete in place including all incidentals	EA	23		
8	Georgia Pacific 59766 Touchless recessed paper towel dispenser, or approved equal, complete in place including all incidentals	EA	8		
9	Bobrick B-386, toilet paper dispenser, or approved equal, complete in place including all incidentals	EA	8		
10	Remove and replace, in kind, mirrors in Men's and Women's bathrooms, complete in place including all incidentals	EA	8		
11	Bobrick B-2840, toilet paper dispenser, or approved equal, complete in place including all incidentals – 3 rd floor men's bathroom	EA	1		
TOTAL					



C1 THIRD LEVEL PLAN
SCALE: 1/8" = 1'-0"



A1 LOWER LEVEL PLAN
SCALE: 1/8" = 1'-0"

LEESBURG TOWN HALL - RESTROOM RENOVATION

PROJECT ADDRESS: 25 WEST MARKET STREET LEESBURG, VA 20170

OWNER: TOWN OF LEESBURG
PROJ. NO.: 1719 - RESTROOM RENOVATION

SEAL

INTERIM REVIEW ONLY
THESE DOCUMENTS ARE INCOMPLETE AND ARE RELEASED FOR INTERIM REVIEW ONLY AND ARE NOT INTENDED FOR REGULATORY APPROVAL, PERMIT, BIDDING OR CONSTRUCTION PURPOSES.

KEY PLAN

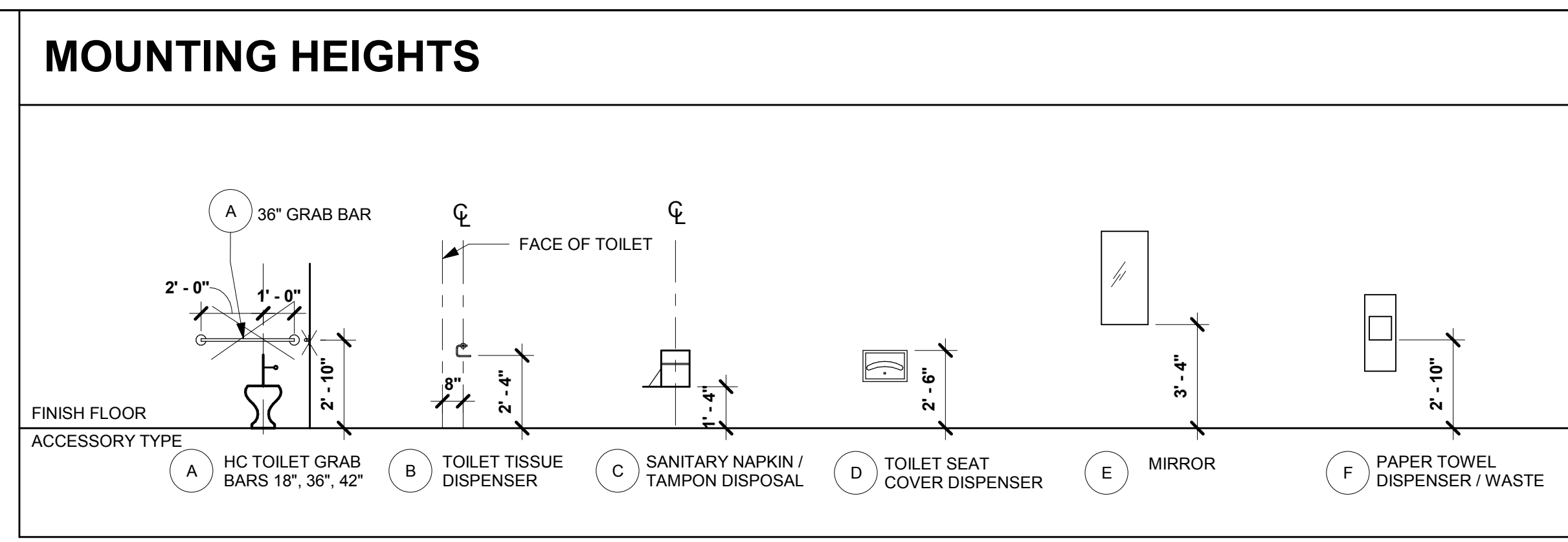
REVISIONS

MARK	DATE	ISSUE

ISSUANCES

DATE	ISSUANCE
08/10/18	BID SET
08/28/18	ADDENDUM 2

LOWER LEVEL AND THIRD LEVEL PLANS



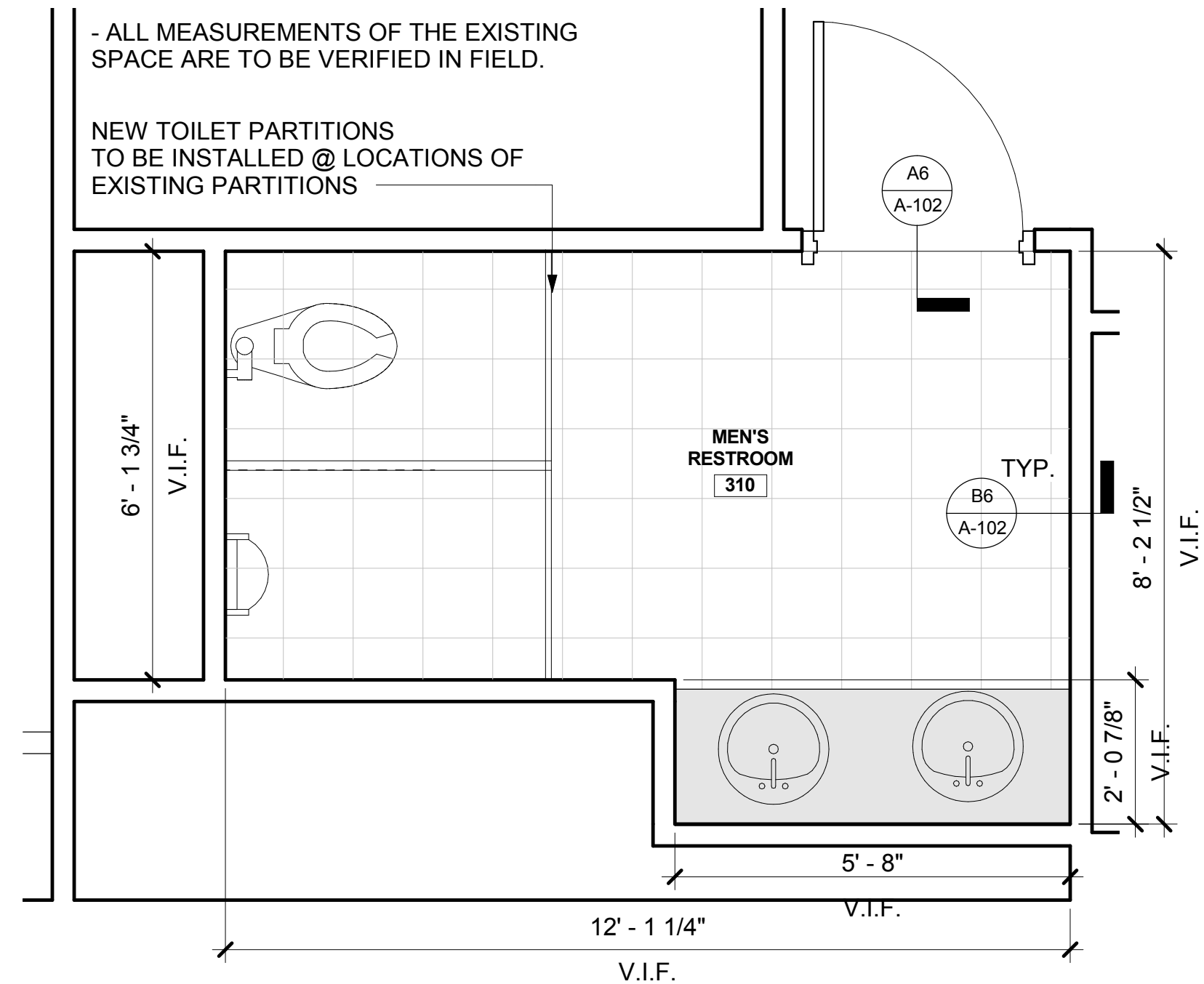
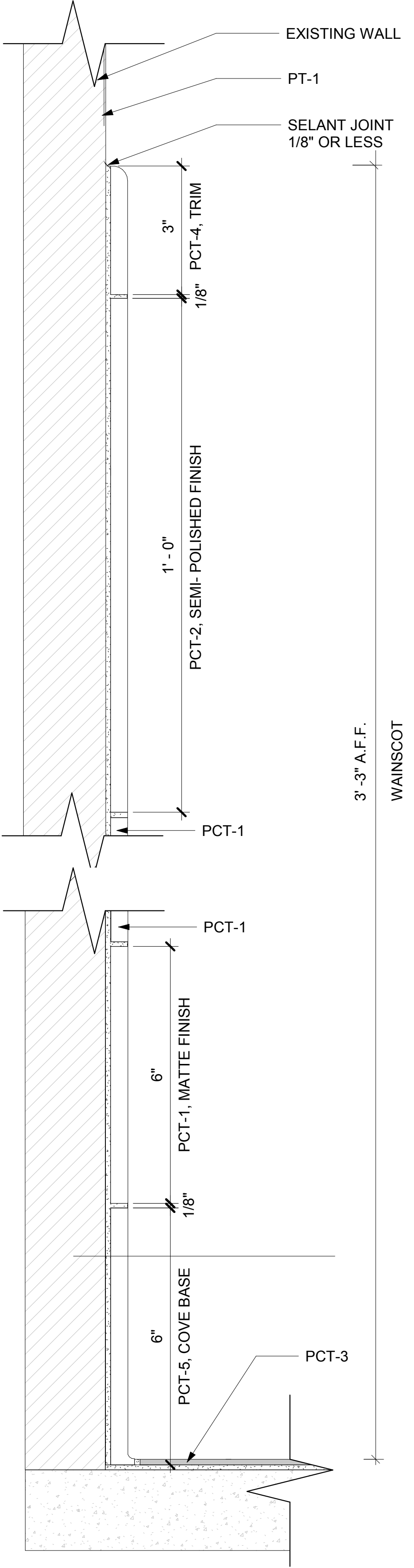
MATERIAL SCHEDULE

DESIGNATION	MATERIAL	MANUFACTURER / PRODUCT	NUMBER / COLOR	SIZE / FINISH	REMARKS
BASE					
PCT-5 FLOOR	PORCELAIN TILE	TRINITY TILE/ ANDROMEDA	SILVER	6" X12"	COVE BASE
PCT-3	PORCELAIN TILE	FLORIDA / CONESTOGA TILE / URBANITE	CONCRETE / 23811	12" X 12"	
SPECIALTY					
GT-1	GROUT	MAPEI	27 / SILVER		EPOXY GROUT @ RESTROOMS
TH-1	MARBLE THRESHOLD	MSI STONE	TUNDRA GRAY	4" X 36" / DOUBLE BEVELED	
TP-1	TOILET PARTITION	SCRANTON PRODUCTS/ HINY HIDERS	STAINLESS		ROTARY BRUSHED
WALL					
PCT-1	PORCELAIN TILE	TRINITY TILE/ ANDROMEDA	SILVER	6" X 24" / MATTE	
PCT-2	PORCELAIN TILE	TRINITY TILE/ ANDROMEDA	SILVER	11.54" X 23.97" / SEMI-POLISHED	
PCT-4	PORCELAIN TILE	TRINITY TILE/ ANDROMEDA	SILVER	3" X 12" / MATTE	WAINSCOT TOP TRIM
PT-1	PAINT	SHERWIN WILLIAMS	7566 / WESTHIGHLAND WHITE	EGGSHELL	PRIMARY
PT-4	PAINT	SHERWIN WILLIAMS	7505 / MANOR HOUSE	SEE SPEC	DOOR AND WINDOW FRAMES FACING EXTERIOR

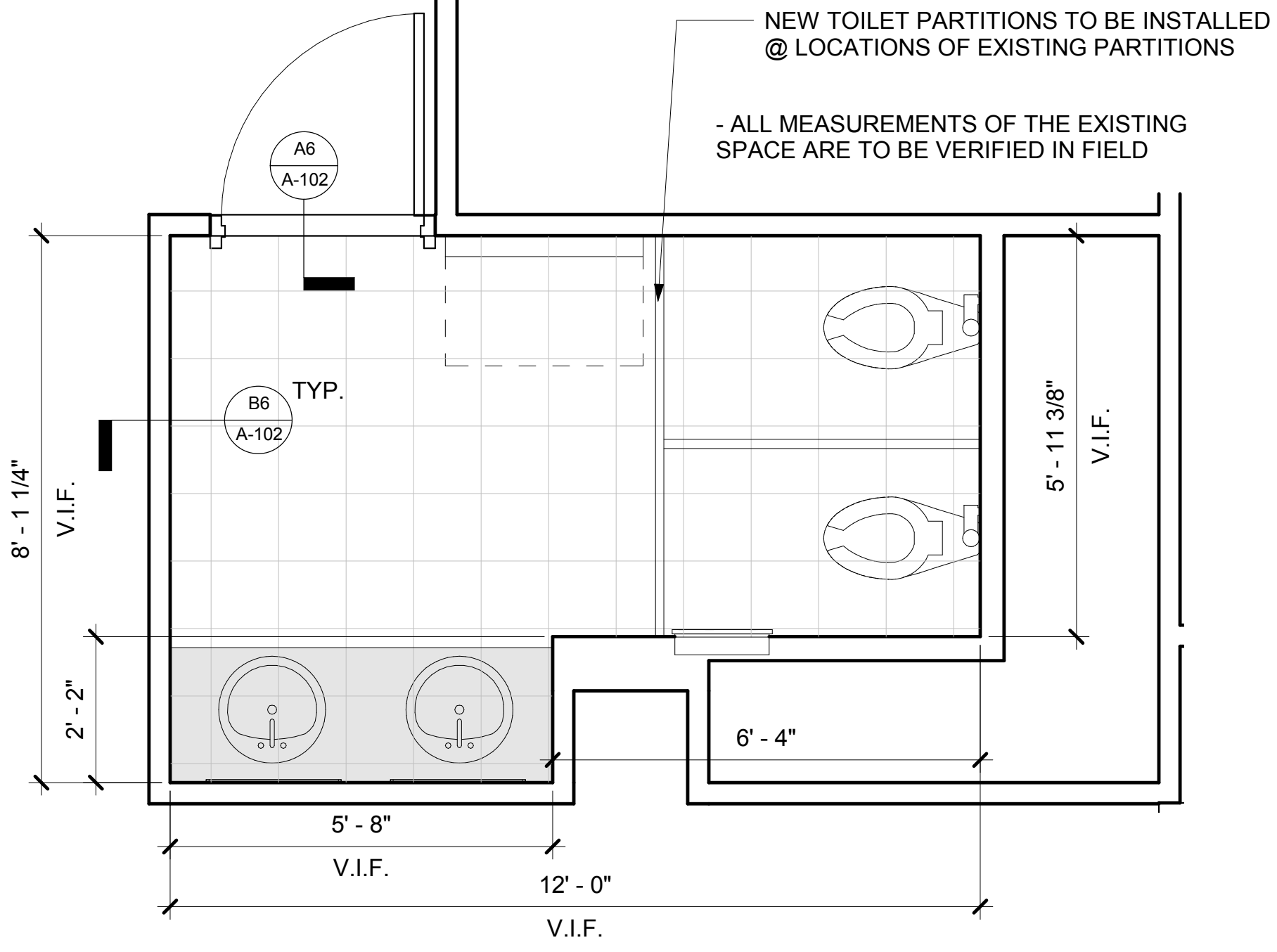
RESTROOM FINISH SCHEDULE

#	SPACE DESCRIPTION	ROOM NAME	FLOOR	FINISHES			REMARKS
				BASE	WAINSCOT	WALLS	
101A-BASEMENT/LOWER LEVEL							
004	MEN'S RESTROOM		PCT-3	PT-2	PCT-1 / PCT-2 / PCT-4	PT-1/ WAINSCOT	CEILING PAINTED FLAT, PT-1
005	WOMEN'S RESTROOM		PCT-3	PT-2	PCT-1 / PCT-2 / PCT-4	PT-1/ WAINSCOT	CEILING PAINTED FLAT, PT-1
GROUND LEVEL PLAN							
116	WOMEN'S RESTROOM		PCT-3	PCT-5	PCT-1 / PCT-2 / PCT-4	PT-1/ WAINSCOT	CEILING PAINTED FLAT, PT-1
117	MEN'S RESTROOM		PCT-3	PCT-5	PCT-1 / PCT-2 / PCT-4	PT-1/ WAINSCOT	CEILING PAINTED FLAT, PT-1
SECOND LEVEL PLAN							
208	WOMEN'S RESTROOM		PCT-3	PCT-5	PCT-1 / PCT-2 / PCT-4	PT-1/ WAINSCOT	CEILING PAINTED FLAT, PT-1
209	MEN'S RESTROOM		PCT-3	PCT-5	PCT-1 / PCT-2 / PCT-4	PT-1/ WAINSCOT	CEILING PAINTED FLAT, PT-1
THIRD LEVEL PLAN							
309	WOMEN'S RESTROOM		PCT-3	PT-2	PCT-1 / PCT-2 / PCT-4	PT-1/ WAINSCOT	CEILING PAINTED FLAT, PT-1
310	MEN'S RESTROOM		PCT-3	PT-2	PCT-1 / PCT-2 / PCT-4	PT-1/ WAINSCOT	CEILING PAINTED FLAT, PT-1

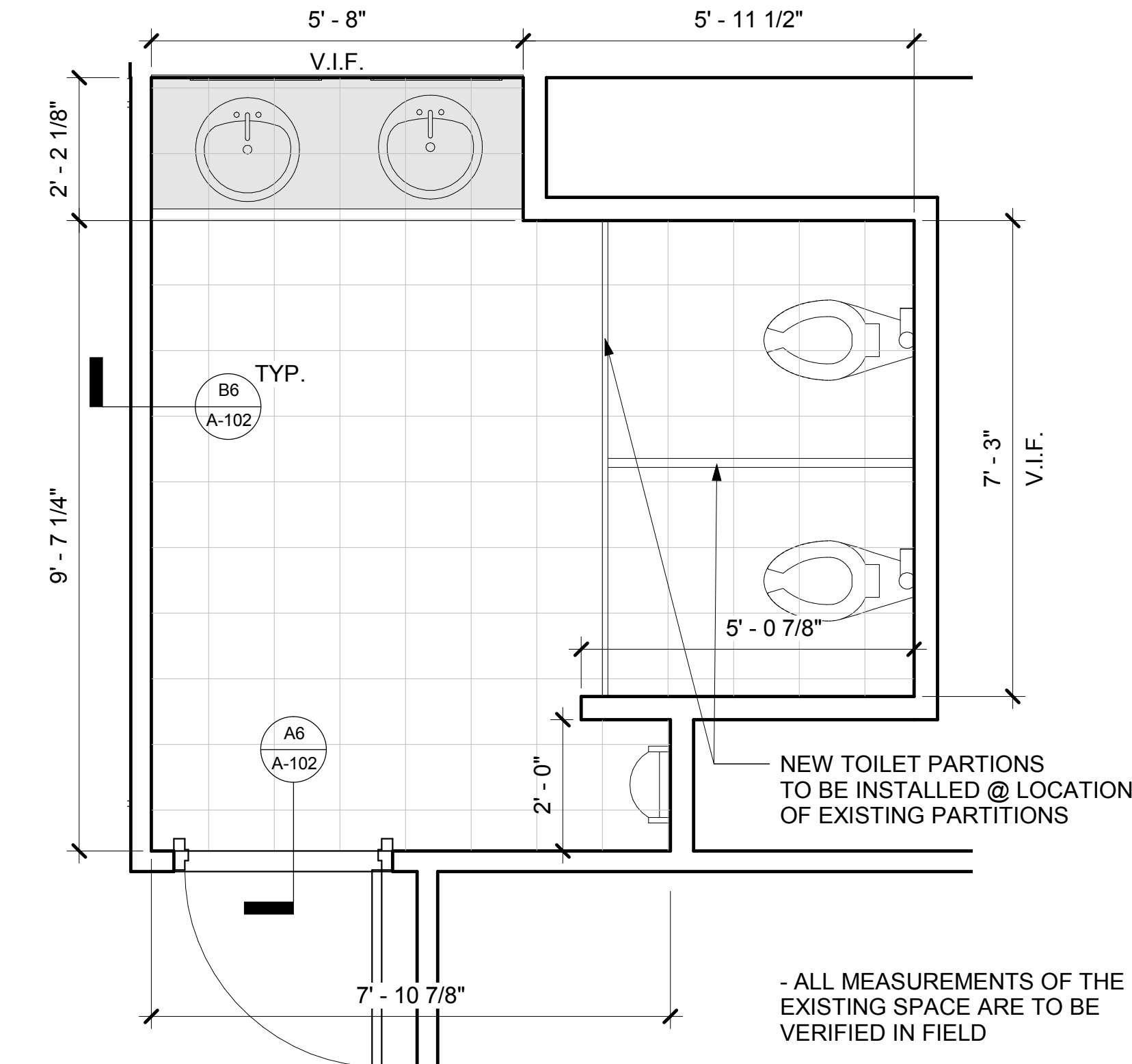
- ### GENERAL NOTES
- PATCH AND SEAL ALL WALL CRACKS AND DENTS PRIOR TO PAINTING
 - REMOVE EXISTING MIRROR PRIOR TO PAINTING AND REPLACE WITH NEW.
 - REMOVE EXISTING FLOOR & WAINSCOT TILE, TOILET PARTITIONS & SINKS. PREPARE SURFACES FOR NEW WORK.
 - EXISTING BUILDING DIMENSIONS ARE TO BE VERIFIED IN FIELD.
 - SEE MATERIAL SCHEDULE FOR ALL FINISHES NOT DESIGNATED IN DRAWING.
 - CONTRACTOR IS RESPONSIBLE FOR ADDING, REMOVING, AND/OR ADJUSTING PLUMBING AND ELECTRIC NEEDED FOR THE INSTALLATION OF EXISTING AND NEW FIXTURES AND ACCESSORIES.
 - CONTRACTOR RESPONSIBLE FOR INSTALLING URINAL AND TOILET FIXTURES PROVIDED BY OWNER.



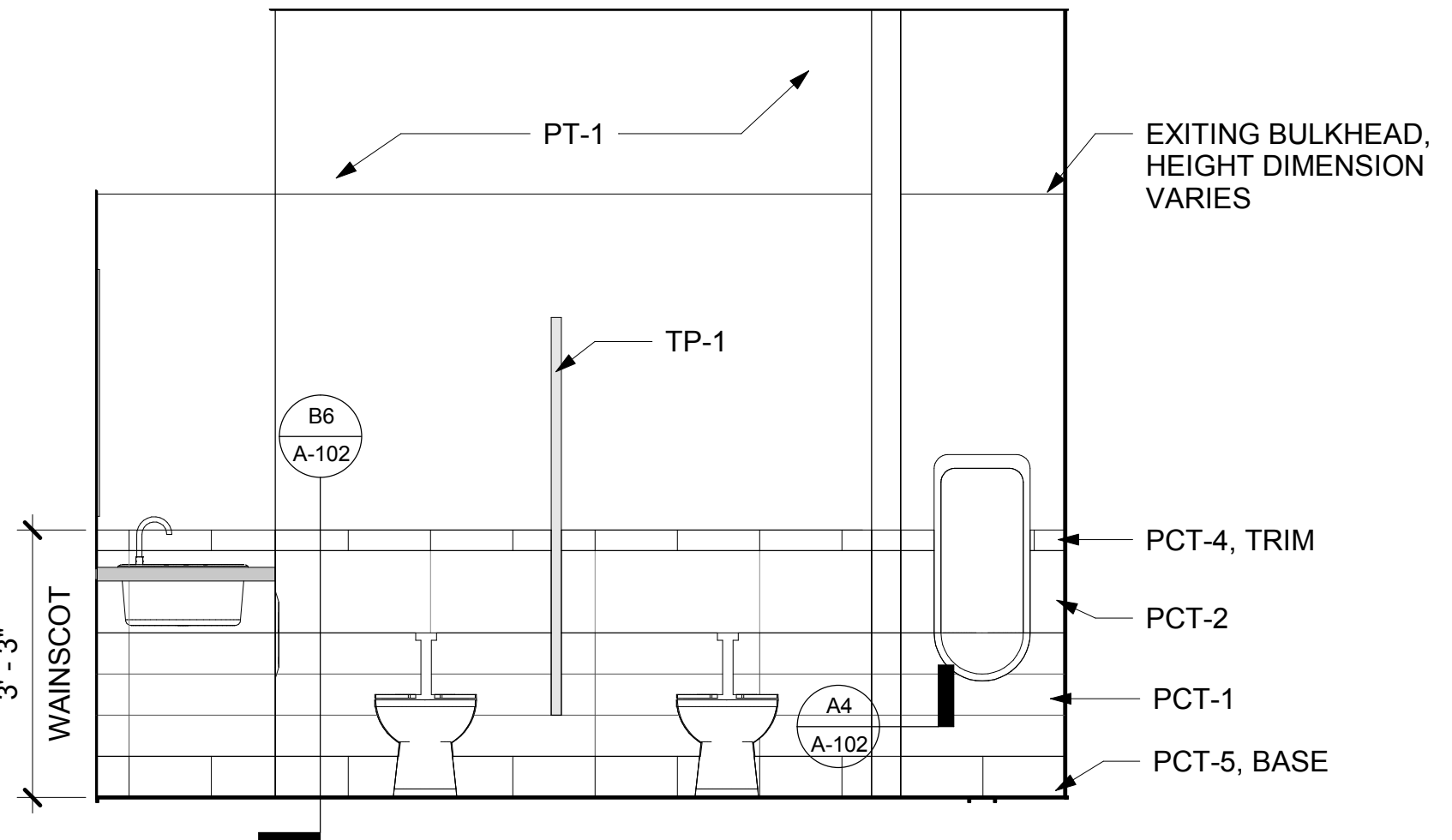
C4 MEN'S RESTROOM - 3RD FLOOR
SCALE: 1/2" = 1'-0"



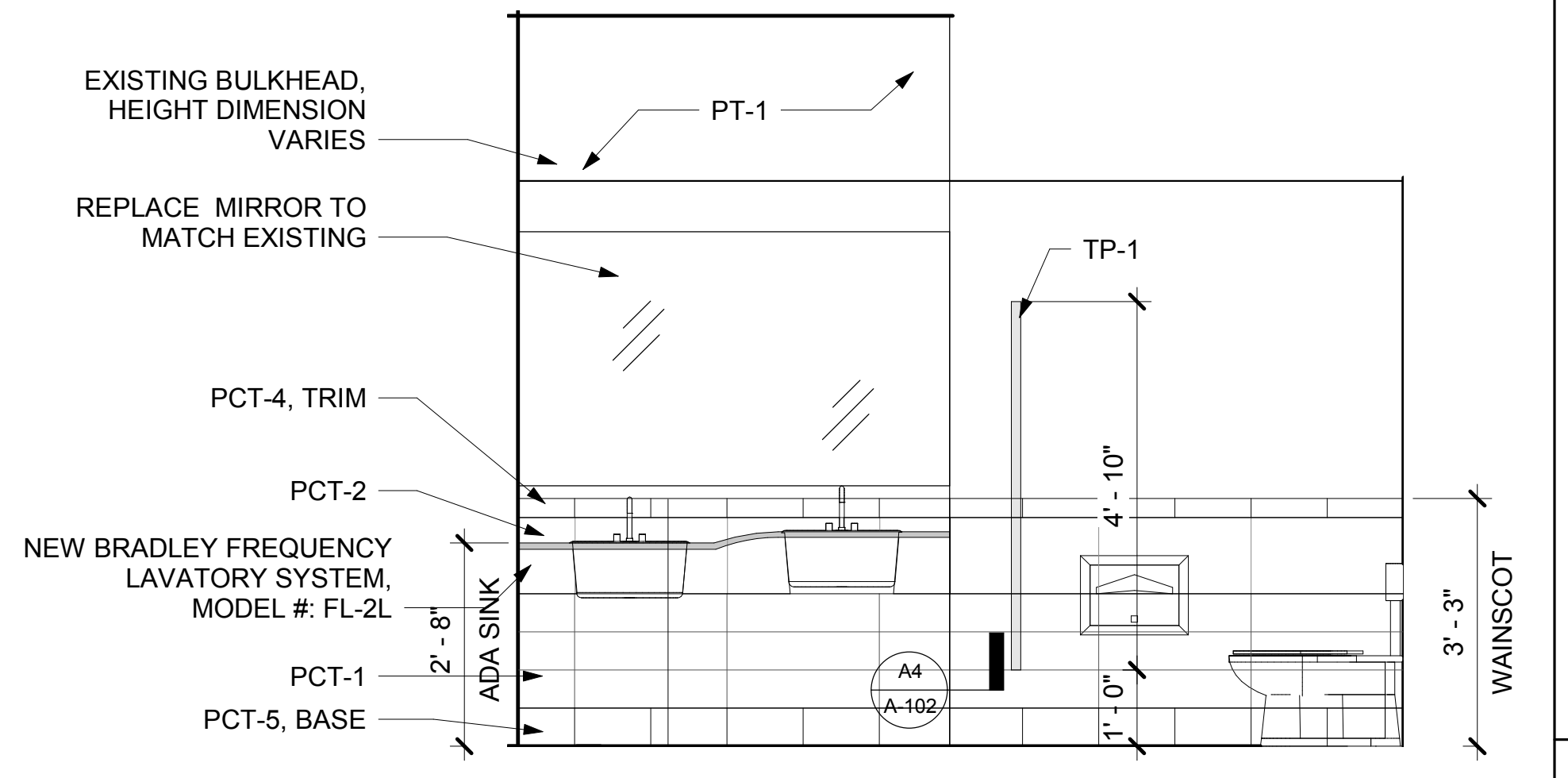
C3 TYP. WOMEN'S RESTROOM PLAN
SCALE: 1/2" = 1'-0"



B4 TYP. MEN'S RESTROOM PLAN
SCALE: 1/2" = 1'-0"

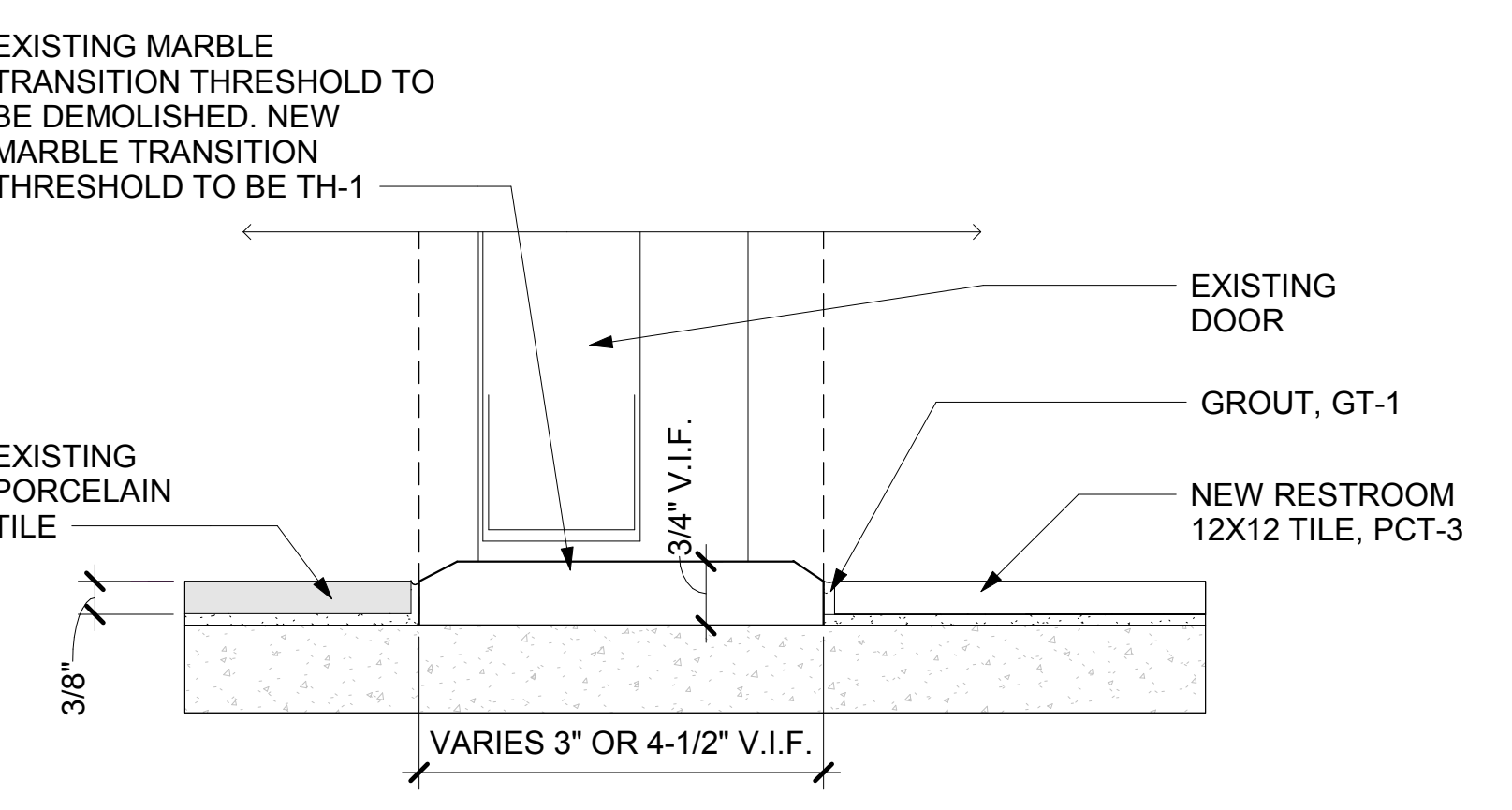


B3 TYP. MEN'S RESTROOM ELEVATION 2
SCALE: 1/2" = 1'-0"

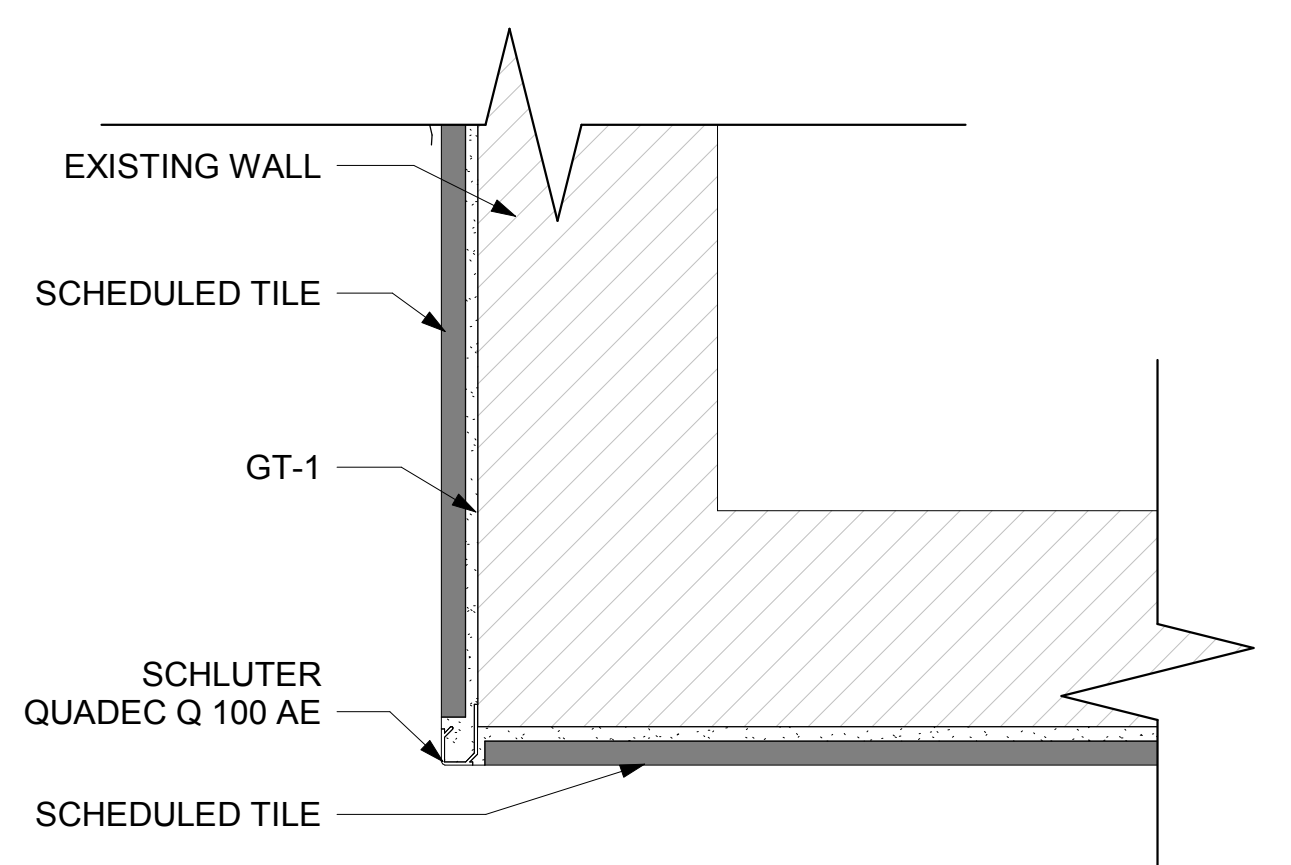


B1 TYP. MEN'S RESTROOM ELEVATION 1
SCALE: 1/2" = 1'-0"

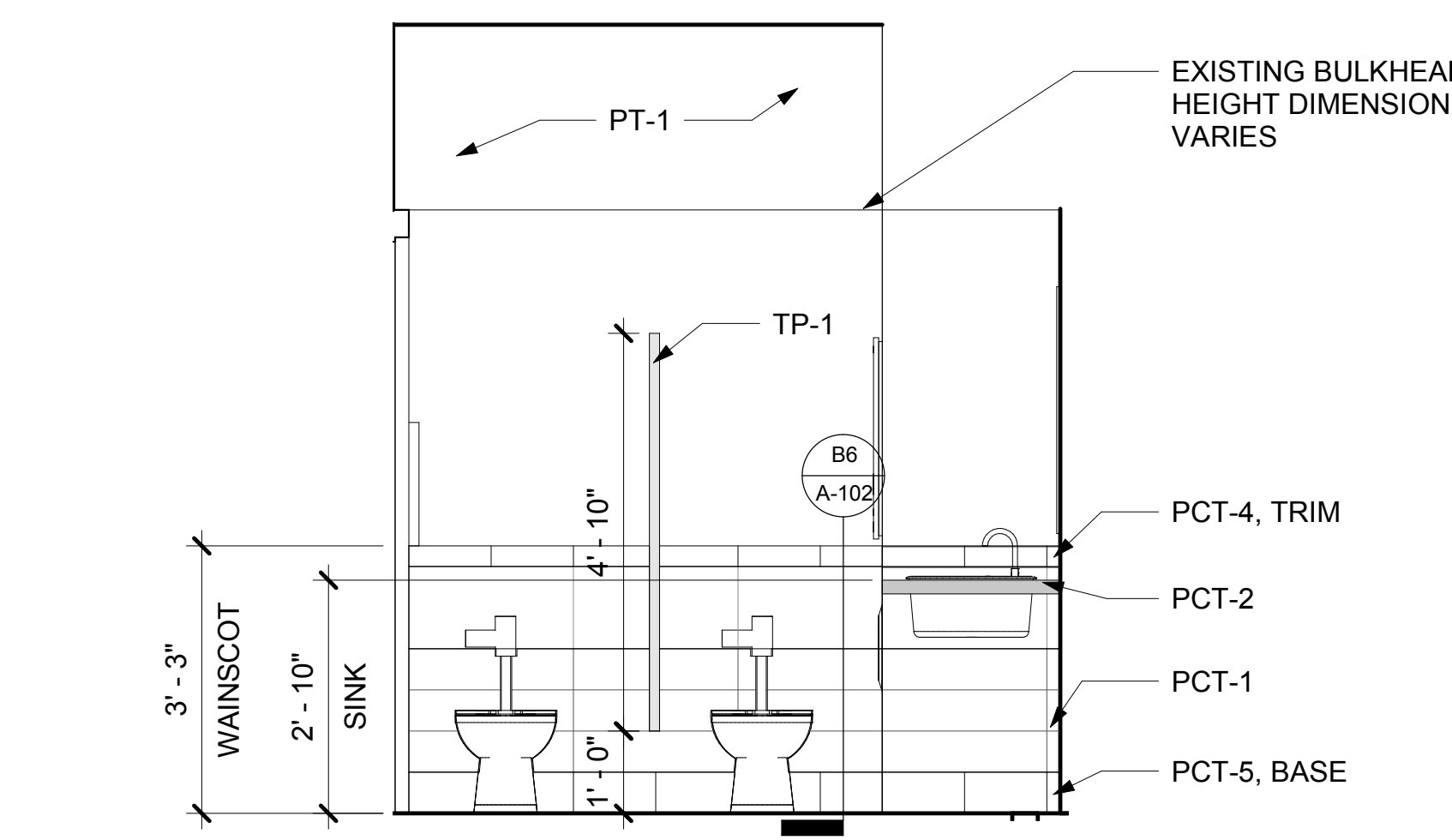
B6 TYPICAL RESTROOM WALL TILE SECTION
SCALE: 6" = 1'-0"



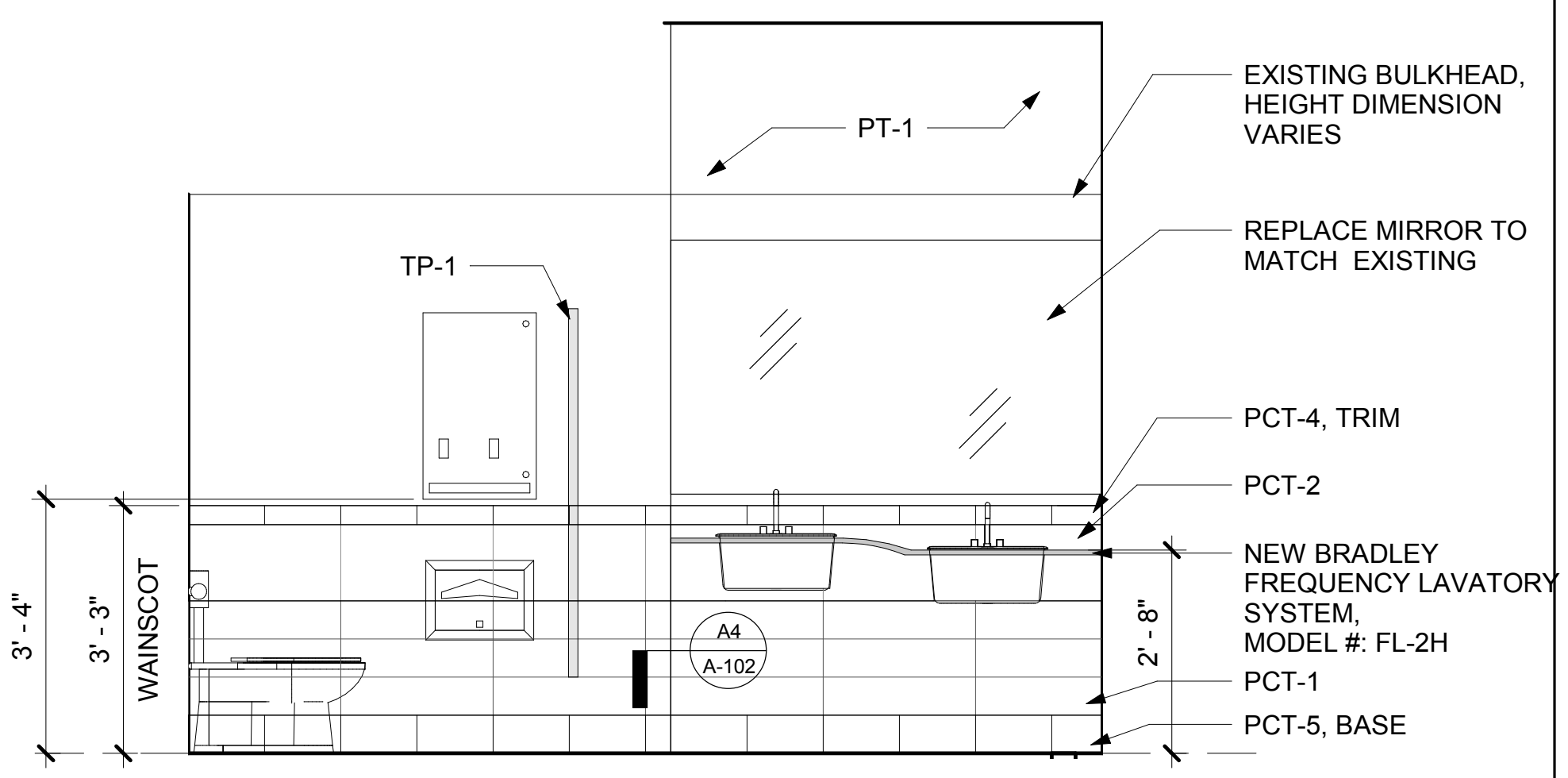
A6 EXISTING MARBLE THRESHOLD TRANSITION DETAIL
SCALE: 6" = 1'-0"



A4 TYP. TILE OUTSIDE CORNER DETAIL
SCALE: 6" = 1'-0"



A3 TYP. WOMEN'S RESTROOM ELEVATION 2
SCALE: 1/2" = 1'-0"



A1 TYP. WOMEN'S RESTROOM ELEVATION 1
SCALE: 1/2" = 1'-0"

SEAL

KEY PLAN

REVISIONS

MARK	DATE	ISSUE

ISSUANCES

DATE	ISSUANCE
08/10/18	BID SET
08/28/18	ADDENDUM 2

ELEVATIONS, DETAILS, AND SCHEDULES