



Leesburg Police Quarterly Crime Report

January - September 2016

Est. Population: 51,209

Total Calls For Service: 2016: 32,286 2015: 39,878 2014: 37,752

Crime Trends:

- Slight increase in Group A incidents (12%)
- Overall Increase in Part 1 crimes (20%)
- Increase in occurrences in Violent Crime (32%)
 - Specifically, aggravated assaults, larcenies, auto theft, *homicide (by 1 occurrence)
 - decrease in robberies and burglaries
- Narcotic cases continue to be prevalent; heroin cases continue to be a special concern
 - There have been 44 general overdoses, resulting in 6 fatalities
 - Of the general overdoses, 13 have been heroin and 4 of the fatalities are from heroin
- Calls for Service have decreased 9% in 2016 for the same period in 2015

Part 1 Crime Comparisons

Year	Homicide	Rape	Robbery	Aggravated Assault	Burglary	Larceny	Auto Theft	Total Part 1
2016	2	11	8	40	11	593	19	684
2015	1	10	9	26	30	478	12	566
Percent Change	100%	10%	-11%	53%	-63%	24%	58%	20%

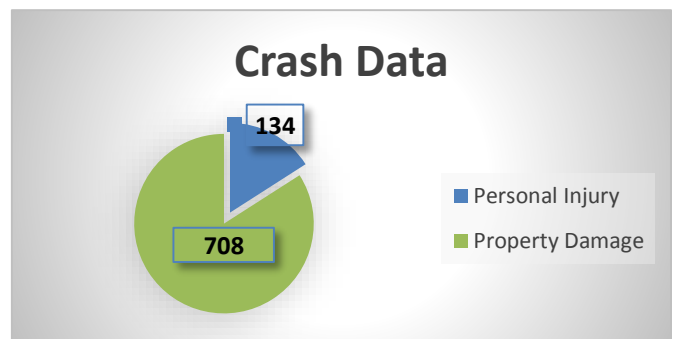
Crime Summaries Comparisons

Year	Group A Incidents	Part 1	Violent Crime	Property Crime
2016	1656	684	61	623
2015	1469	566	46	520
Percent Change	12%	20%	32%	19%

Major Crash Locations (frequency)

Total Number of Crashes: 842

Top Crash Locations (YEAR TO DATE)	Number of Crashes
East Market St. @ Battlefield Parkway	55
East Market St. @ Rt. 15 Bypass	27
Rt. 15 Bypass @ Edwards Ferry Road	24
East Market St. @ Cardinal Park Drive	17
East Market St. @ Plaza Street	16



Crash locations include areas in the general vicinity of intersections such as approaches, turn lanes, and ramps. Data also includes incidents that occurred as a direct result of the traffic control device and backups.